

Алматы (7273)495-231  
Ангарск (3955)60-70-56  
Архангельск (8182)63-90-72  
Астрахань (8512)99-46-04  
Барнаул (3852)73-04-60  
Белгород (4722)40-23-64  
Благовещенск (4162)22-76-07  
Брянск (4832)59-03-52  
Владивосток (423)249-28-31  
Владикавказ (8672)28-90-48  
Владимир (4922)49-43-18  
Волгоград (844)278-03-48  
Вологда (8172)26-41-59  
Воронеж (473)204-51-73  
Екатеринбург (343)384-55-89

Иваново (4932)77-34-06  
Ижевск (3412)26-03-58  
Иркутск (395)279-98-46  
Казань (843)206-01-48  
Калининград (4012)72-03-81  
Калуга (4842)92-23-67  
Кемерово (3842)65-04-62  
Киров (8332)68-02-04  
Колмна (4966)23-41-49  
Кострома (4942)77-07-48  
Краснодар (861)203-40-90  
Красноярск (391)204-63-61  
Курск (4712)77-13-04  
Курган (3522)50-90-47  
Липецк (4742)52-20-81

Магнитогорск (3519)55-03-13  
Москва (495)268-04-70  
Мурманск (8152)59-64-93  
Набережные Челны (8552)20-53-41  
Нижний Новгород (831)429-08-12  
Новокузнецк (3843)20-46-81  
Ноябрьск (3496)41-32-12  
Новосибирск (383)227-86-73  
Омск (3812)21-46-40  
Орел (4862)44-53-42  
Оренбург (3532)37-68-04  
Пенза (8412)22-31-16  
Петрозаводск (8142)55-98-37  
Псков (8112)59-10-37  
Пермь (342)205-81-47

Ростов-на-Дону (863)308-18-15  
Рязань (4912)46-61-64  
Самара (846)206-03-16  
Санкт-Петербург (812)309-46-40  
Саратов (845)249-38-78  
Севастополь (8692)22-31-93  
Саранск (8342)22-96-24  
Симферополь (3652)67-13-56  
Смоленск (4812)29-41-54  
Сочи (862)225-72-31  
Ставрополь (8652)20-65-13  
Сургут (3462)77-98-35  
Сыктывкар (8212)25-95-17  
Тамбов (4752)50-40-97  
Тверь (4822)63-31-35

Тольятти (8482)63-91-07  
Томск (3822)98-41-53  
Тула (4872)33-79-87  
Тюмень (3452)66-21-18  
Ульяновск (8422)24-23-59  
Улан-Удэ (3012)59-97-51  
Уфа (347)229-48-12  
Хабаровск (4212)92-98-04  
Чебоксары (8352)28-53-07  
Челябинск (351)202-03-61  
Череповец (8202)49-02-64  
Чита (3022)38-34-83  
Якутск (4112)23-90-97  
Ярославль (4852)69-52-93

Россия +7(495)268-04-70

Казахстан +7(7172)727-132

Киргизия +996(312)96-26-47

<https://elcometer.nt-rt.ru/> || [erj@nt-rt.ru](mailto:erj@nt-rt.ru)

elcometer®  
inspection equipment



ElcoMaster®

Data Management Software







Coating inspection regimes require data to be collected on many of the parameters of the coating process: surface profile, surface cleanliness, climatic conditions, film thickness and adhesion. All of these inspections generate a large amount of data.

Elcometer have designed a series of data management software packages that will link directly with the data collection devices (gauges) and instantly produce professional reports, offering full traceability of the inspection proving compliance to the relevant standard being followed.

Our free software package, ElcoMaster® is the most flexible data management software on the market. Designed to meet the demanding needs of the quality inspector whilst offering the ultimate flexibility for managing data into 'projects' for ease of use.

Producing professional reports is easily achieved using the standard report templates within the software package or by using the customisation options to produce customer specific reports.

Making full use of data transfer technology - Bluetooth® and Cloud applications, Elcometer provides fast and efficient means of transferring and sharing data and allows fully comprehensive project reports to be generated.

Any document (even hand written notes) can be scanned, converted to .pdf and then stored in the project file within ElcoMaster®.

For those users wanting to transfer data into other software applications ElcoMaster® can be configured to export data directly, there is no need to use the data management aspect of the software.

As with our gauges this software is dynamic in that Elcometer are always adding new features as our customers require them.

Updates to the software are freely available over the internet and it is also possible to upgrade our inspection gauges when they are connected to ElcoMaster®.

ElcoMaster® is the complete solution.

# Data Management Software



## Data Management Software

ElcoMaster® is a fast, easy to use software and mobile app for all your data management, reporting and quality assurance needs.

It's not just taking measurements but what you do with the collected data that matters.

### Easy to connect

Using ElcoMaster's® gauge wizard, connecting a gauge & downloading data (via Bluetooth® or USB) is fast and easy

### Export, print or send

Export, print, .pdf or email directly from ElcoMaster® at the click of a button

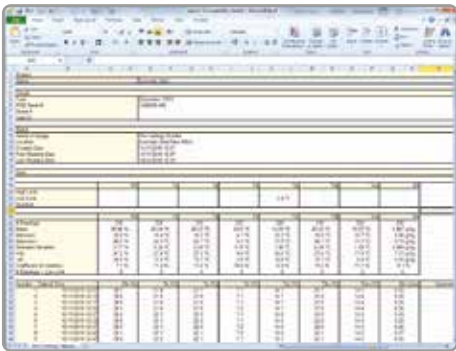


### Import existing reports

Scan your existing report into ElcoMaster® and drag & drop all your data where you want it, then simply save and print

### Cloud

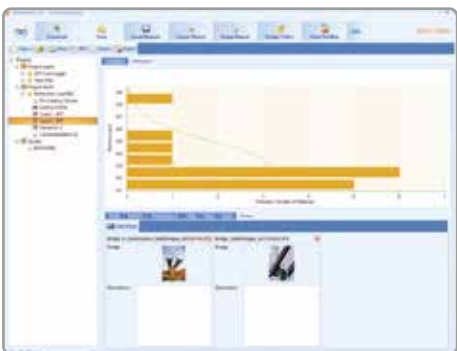
Multi-site access through secure cloud computing



ElcoMaster® exports data direct to Microsoft Excel. csv, txt, cqtq formats etc. to save time and prevent keying in errors.



Data can be stored in a simple file tree, by project and by inspection type.



Add photographs and notes to your reports.

As inspectors can spend up to 30% of their working week producing reports, ElcoMaster® saves time and money by producing professional bespoke reports in seconds - even when out on site.

## What ElcoMaster® can do:

- Import and combine measurements via Bluetooth® or USB from a full range of Elcometer gauges, including;
  - Surface Profile
  - Salt Contamination
  - Climatic Conditions
  - Oven Data Logging
  - Coating Thickness
  - Corrosion Thickness
  - Adhesion Testing
  - Gloss Measurement
- No need to learn different software for different gauges, all Elcometer products use the same expert platform.
- Store data in a simple file tree, by project and by inspection type.
- Easy on screen analysis with histograms, statistics, measurements, limits, notes, diagrams and photographs.
- Export data direct to Microsoft Excel. csv. txt. Cqatk formats etc to save time and prevent keying in errors.
- Generates reports instantly using standard or pre-designed templates in seconds. No need for data manipulation simply connect the gauge, download data and drag & drop.
- Combine multiple inspection parameters (such as DFT, profile, climate, adhesion and gloss) together with images, notes and other project specific information in bespoke quality reports to set you apart from the competition.
- In many industries multiple sites/locations/production lines are used to fabricate the product components which are brought together at the final assembly line. Different inspection parameters all need to be combined to approve the final product. Using Cloud technology ElcoMaster® gives you real time quality control monitoring inspection projects in any location.



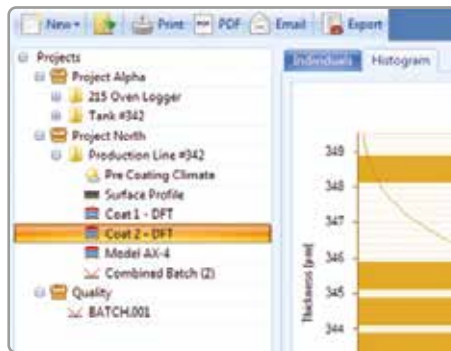
Cloud



Email



Using the Report Designer within ElcoMaster®, measurements can be quickly displayed on an image or drawing.



Combine multiple inspection parameters (DFT, climate, profile, adhesion, gloss & salt contamination) into bespoke reports.



Generate .pdf reports combining all your inspection data and share via email or the cloud at the click of a button.



ElcoMaster® Mobile App brings the office to where you are.

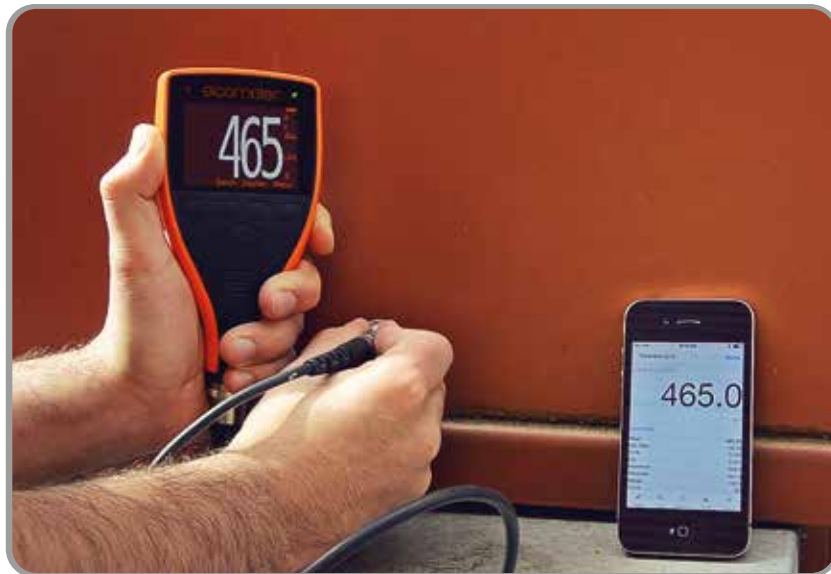
You can connect Elcometer Bluetooth® enabled inspection gauges directly to iPhone, iPad and iPods or Android™ mobile phones and tablets via ElcoMaster® Mobile App.

When out in the field or on site, you can review data instantly using our free ElcoMaster® Mobile App. Press 'Generate PDF' and watch the ElcoMaster® App produce a professional report instantly. Email the report to your client seconds after you have finished inspecting or upload it via cloud technology so it can be accessed anywhere in the world.

With data transferred to mobile devices whilst out in the field, the Elcometer gauge does not have to be returned to the office for data download. Inspection work can continue without interruption.

ElcoMaster® Mobile App shares many features of ElcoMaster® for PC:

- Download batches from Elcometer Bluetooth® enabled gauges
- Add notes, photographs and diagrams
- Pdf. and email reports
- Using the phone's GPS feature, add this data to batch files
- Use collection batch measurement location points on photos or images to indicate to users where each measurement needs to be taken



- ☐ Surface Profile
- ☐ Salt Contamination
- ☐ Climatic Conditions
- ☐ Coating Thickness
- ☐ Corrosion Thickness
- ☐ Adhesion Testing
- ☐ Gloss Measurement



With data transferred to mobile communication devices, the Elcometer gauge does not have to be returned to the office for data download. Inspection work can continue without interruption.

## Connect

Connect gauge via Bluetooth® to phone to see live readings directly on the phone and save them into batches.

## Review

Review average, maximum and minimum readings instantly.

## Analyse

Analyse data via sequential readings, statistics, charts & histograms or on images.

## Manage & Print

Store all data; dry film thickness, surface profile, climate and manual reports in easy to manage folders.

## Photos & Notes

Add photos, notes and comments.

## Send

Email inspection data from a mobile device to a PC for further analysis and reporting or transfer data via the Cloud.

## GPS

Store GPS locations in batches and view location on Google Maps.



Cloud



Email



## Elcometer 215

## Oven Data Logger



**High Temperature Barrier Kit**  
Thermal barrier & heat sinks for longer time at temperature



**Standard Thermal Barrier Kit**  
With thermal barrier - ideal for single runs

ElcoMaster® is the easy to use software solution designed specifically for the management and assessment of your temperature profile, allowing you to generate professional inspection reports in seconds. Features include:

**Oven Logger Set Up** - Create and store unique oven profile setups, name each of the 6 channels, set sampling rates, number of batch runs, start/stop triggers and transfer them to the gauge.

**Coating Parameters** - Set up a library of individual paint types incorporating min, mid & max cure temperatures as well as the maximum absolute and minimum cross link temperatures.

**Coating Datasheets** - Save a copy of the coating's data sheet as a permanent record.

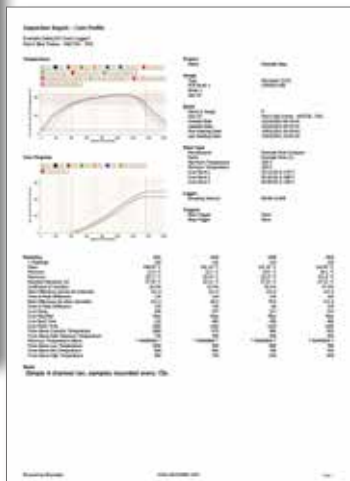
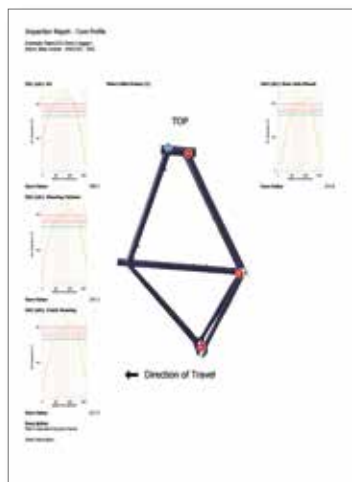
**Product Probe Maps** - Simply drag and drop up to 6 probe ID markers on to your product photo or drawing to record exact probe placement for each production run.

**Customisable Templates** - Create your own comprehensive inspection profile - simply choose a relevant gauge setup, paint parameter and product probe map from your library and assign them to your logger data, providing instant, meaningful and professional reports.

**Elcometer Cure Value** - Using the industry accepted cure value calculation ElcoMaster® provides instant Pass/Fail information by comparing the production run temperature to the coating supplier's cure requirements.

**Graphical Reporting** - Standard temperature profile graph, cure process and individual profile/cure graphs combined with the product probe map are available as standard.

**Combined Reports** - Fully customisable reports can be quickly generated - allowing oven profile reports to be combined with data from coating thickness, gloss & adhesion gauges.





## Oven Data Logger

**Elcometer 215**

### ElcoMaster® Software Oven Profiling Key Features

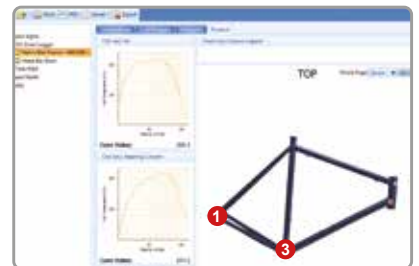
Oven Logger set up & programming	■
Paint/Powder parameter library	■
Product probe maps	■
Fully customisable inspection templates	■
Selectable probe/channel traces	■
Statistical analysis by probe/channel Max, Min, standard deviation, coefficient of variation	■
Temperature profile, cure progress, histogram & individual cure value graphs against product	■
Time at temperature, time of peak difference	■
Time above maximum absolute & minimum cross link temperatures	■
Fully customisable inspection reports	■
Combined reports - coating thickness, gloss, adhesion, profile, climate, surface cleanliness	■
Report generator wizard & PDF generator	■
Email or export data	■
Import photos, data sheets, critical data, inspection notes, etc & include on inspection reports	■
Cloud computing - allows for cross site collaboration, including internal text messaging tool	■
Overlay temperature profiles, review and compare multiple oven profiles over time	■
Use additional data loggers for multiple channels or run overlays	■



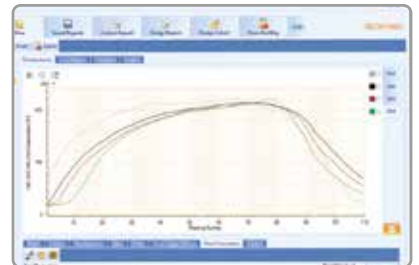
Create and store unique oven profile setups and transfer them to the gauge.



Set up a library of individual paint parameters.



Individual product probe maps record the exact probe placement for each component.



Standard temperature profile and cure process graphs can be viewed at any time.

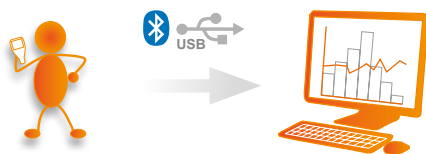


Statistical analysis by probe/channel.

### The different ways ElcoMaster® can help you do your job better

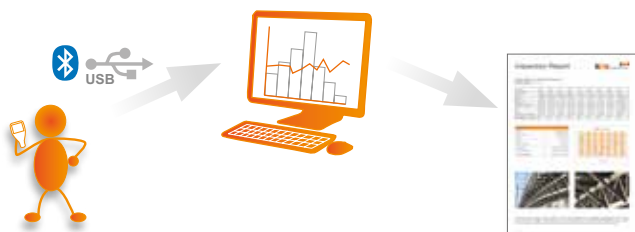
ElcoMaster® has been designed to be a very intuitive method of developing professional reports as it is extremely versatile. Here are just a few ways ElcoMaster® can be used in day-to-day activities of a coating professional.

#### 1. Gauge to PC to Excel



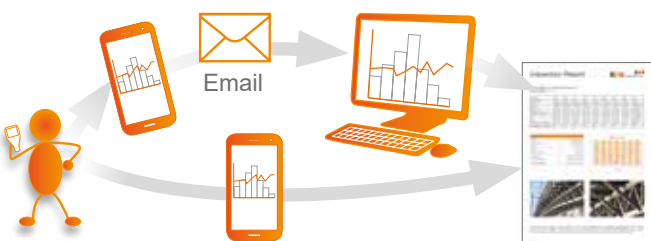
Transferring inspection data straight into Microsoft Excel via Bluetooth® or USB is simple and easy.

#### 2. Gauge to PC data transfer into ElcoMaster®



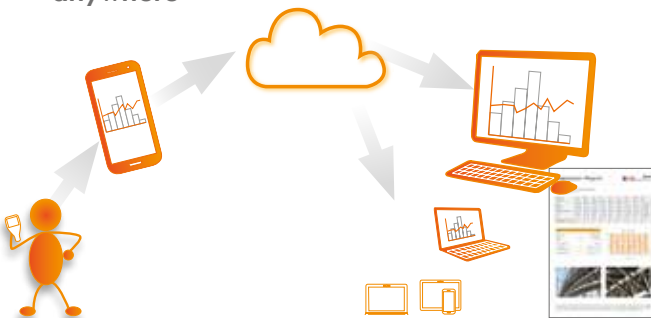
Using Bluetooth® or USB, ElcoMaster® transfers inspection data in seconds, archiving data and generating reports at the click of a button.

#### 3. ElcoMaster® Mobile App for immediate data transfer from the site to the office



Transfer inspection data straight to mobiles and tablets via Bluetooth® when on site for instant analysis, generate .pdf reports<sup>1</sup> and email them back to the office for storing, review and QA reporting.

#### 4. Upload to a cloud for real time analysis anywhere



Using ElcoMaster® Mobile App you can upload inspection data, photos, notes and GPS coordinates direct to a Cloud account of your choice via 3G/4G or WiFi.

All data is instantly visible to other approved users of the account - through a secure log-in on any computer or mobile device anywhere in the world.

#### 5. Seamlessly link multiple sites or production lines



ElcoMaster® gives you real time quality control monitoring from multiple inspection projects in any location.

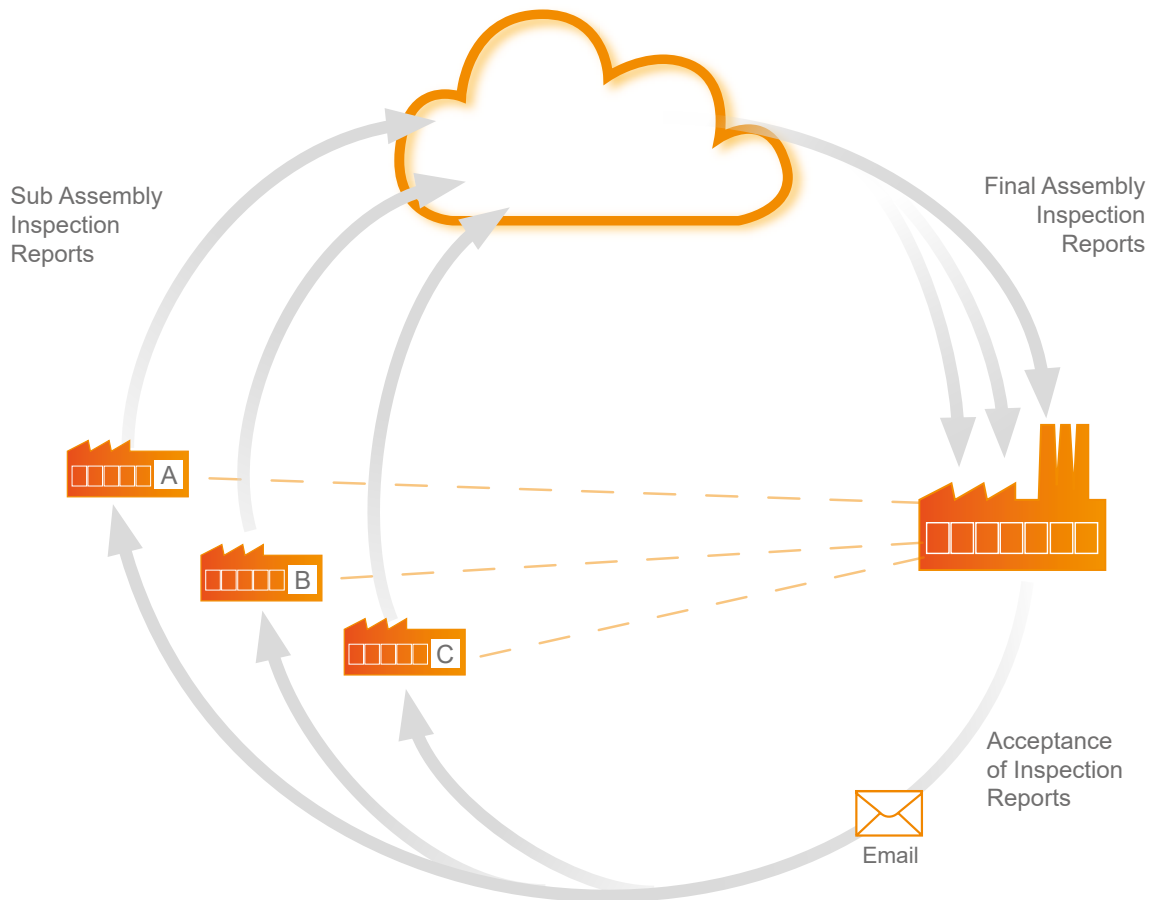
You can compare and combine inspection data from different production lines or different locations, to produce specific Project Inspection Reports quickly and easily.

<sup>1</sup> Available on iOS devices only

## How ElcoMaster® Works

**ElcoMaster®**  
data management software

### 6. Real time collaboration for multi-site projects



#### Real time collaboration for multi-site projects

When working with manufacturers of sub-assemblies across the globe ElcoMaster® can collate all inspection data from each site, assembly line and project into one shared location. Contractors can then:

- Accept or reject parts before shipment from sub-assembly plants.
- Combine all data from sub assembly and final assembly inspection to generate Project Inspection Reports for quality management, both during the project and after completion of the project.
- Have real time in progress visibility across the whole project, no matter where the sub-assembly manufacturing is in the world.
- Have multi-site collaboration, real time dialogue and decision making to improve efficiency and quality throughout the production process.

#### Real time communication

Featuring instant messaging the ElcoMaster® Mobile App lets you add messages to inspection data, projects and files, allowing you to immediately discuss key points with your colleagues, managers or clients, send work instructions and store messages within the project file.

#### Your data - your choice - your control

ElcoMaster® allows you to decide which Cloud service provider to use. It is your data, it is secure as only approved users can have access, no third parties can see your data.

ElcoMaster® Mobile App is compatible with a range of cloud service providers and FTP servers including:

Алматы (7273)495-231  
Ангарск (3955)60-70-56  
Архангельск (8182)63-90-72  
Астрахань (8512)99-46-04  
Барнаул (3852)73-04-60  
Благовещенск (4162)22-76-07  
Белгород (4722)40-23-64  
Брянск (4832)59-03-52  
Владивосток (423)249-28-31  
Владикавказ (8672)28-90-48  
Владимир (4922)49-43-18  
Волгоград (844)278-03-48  
Вологда (8172)26-41-59  
Воронеж (473)204-51-73  
Екатеринбург (343)384-55-89

Иваново (4932)77-34-06  
Ижевск (3412)26-03-58  
Иркутск (395)279-98-46  
Казань (843)206-01-48  
Калининград (4012)72-03-81  
Калуга (4842)92-23-67  
Кемерово (3842)65-04-62  
Киров (8332)68-02-04  
Коломна (4966)23-41-49  
Кострома (4942)77-07-48  
Краснодар (861)203-40-90  
Красноярск (391)204-63-61  
Курск (4712)77-13-04  
Курган (3522)50-90-47  
Липецк (4742)52-20-81

Магнитогорск (3519)55-03-13  
Москва (495)268-04-70  
Мурманск (8152)59-64-93  
Набережные Челны (8552)20-53-41  
Нижний Новгород (831)429-08-12  
Новокузнецк (3843)20-46-81  
Ноябрьск (3496)41-32-12  
Новосибирск (383)327-86-73  
Омск (3812)21-46-40  
Оренбург (3532)37-68-04  
Орел (4862)44-53-42  
Пенза (8412)22-31-16  
Петрозаводск (8142)55-98-37  
Псков (8112)59-10-37  
Пермь (342)205-81-47

Ростов-на-Дону (863)308-18-15  
Рязань (4912)46-61-64  
Самара (846)206-03-16  
Санкт-Петербург (812)309-46-40  
Саратов (845)249-38-78  
Севастополь (8692)22-31-93  
Саранск (8342)22-96-24  
Симферополь (3652)67-13-56  
Смоленск (4812)29-41-54  
Сочи (862)225-72-31  
Ставрополь (8652)20-65-13  
Сургут (3462)77-98-35  
Сыктывкар (8212)25-95-17  
Тамбов (4752)50-40-97  
Тверь (482)63-31-35

Тольятти (8482)63-91-07  
Томск (3822)98-41-53  
Тула (4872)33-79-87  
Тюмень (3452)66-21-18  
Ульяновск (8422)24-23-59  
Улан-Удэ (3012)59-97-51  
Уфа (347)229-48-12  
Хабаровск (4212)92-98-04  
Чебоксары (8352)28-53-07  
Челябинск (351)202-03-61  
Череповец (8202)49-02-64  
Чита (3022)38-34-83  
Якутск (4112)23-90-97  
Ярославль (4852)69-52-93

Россия +7(495)268-04-70

Казахстан +7(7172)727-132

Киргизия +996(312)96-26-47

<https://elcometer.nt-rt.ru/> || [erj@nt-rt.ru](mailto:erj@nt-rt.ru)